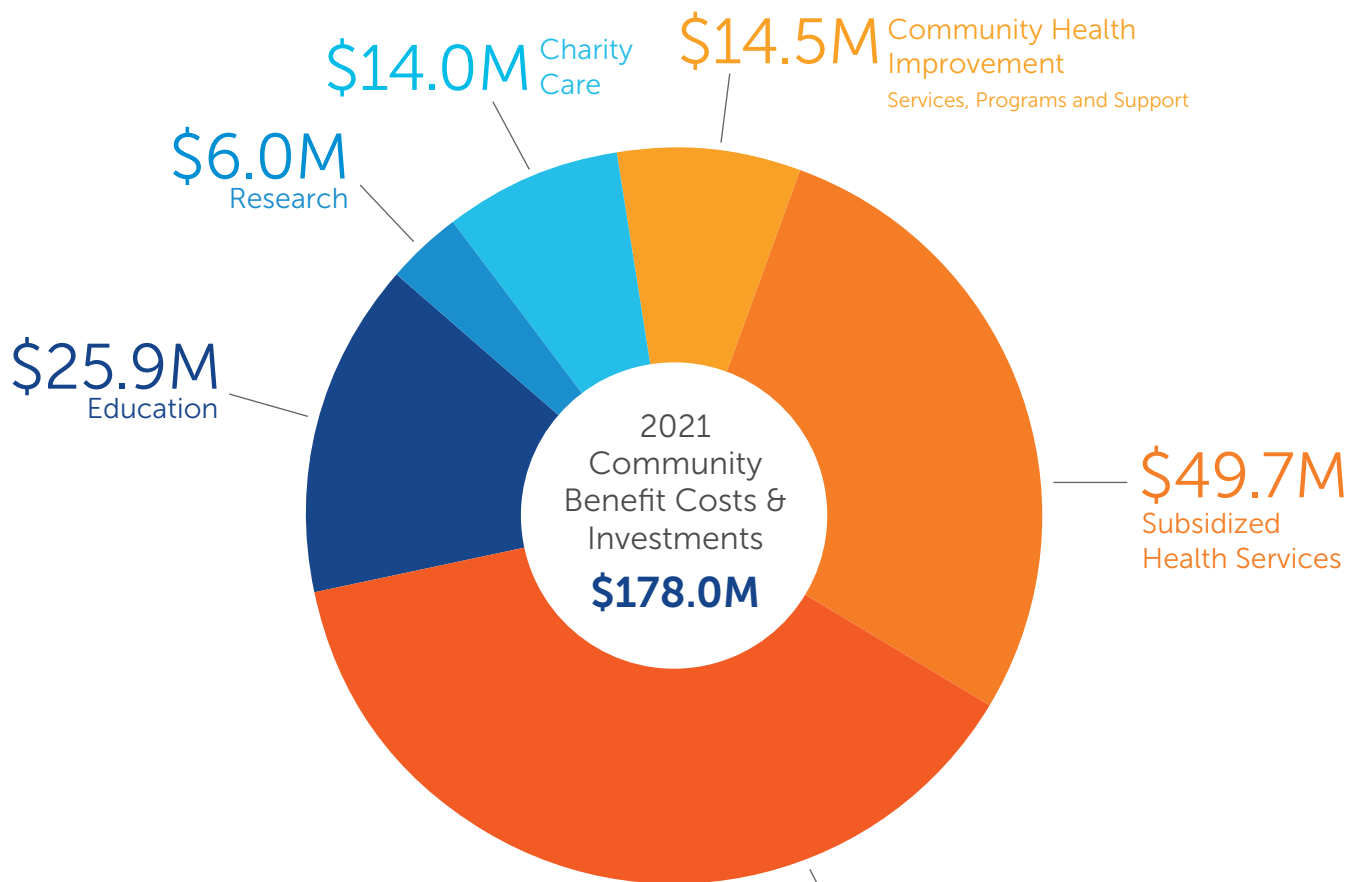


# Financials

## 2021 Community Benefit

### 2021 Community Benefit Summary



#### Summa Health and Affiliate\*

**\$14.5M** Community Health Improvement Services, Programs and Support

**\$49.7M** Subsidized Health Services

**\$67.9M** Medicaid Shortfall

**\$25.9M** Education

**\$6.0M** Research

**\$14.0M** Charity Care

\*To measure and report community benefit, Summa Health, which includes Summa Health System—Akron, Barberton and St. Thomas Campuses, Summa Health Medical Group and Summa Rehab Hospital, a joint venture between Summa and Vibra Healthcare, follows Internal Revenue Service and Catholic Health Association guidelines.

