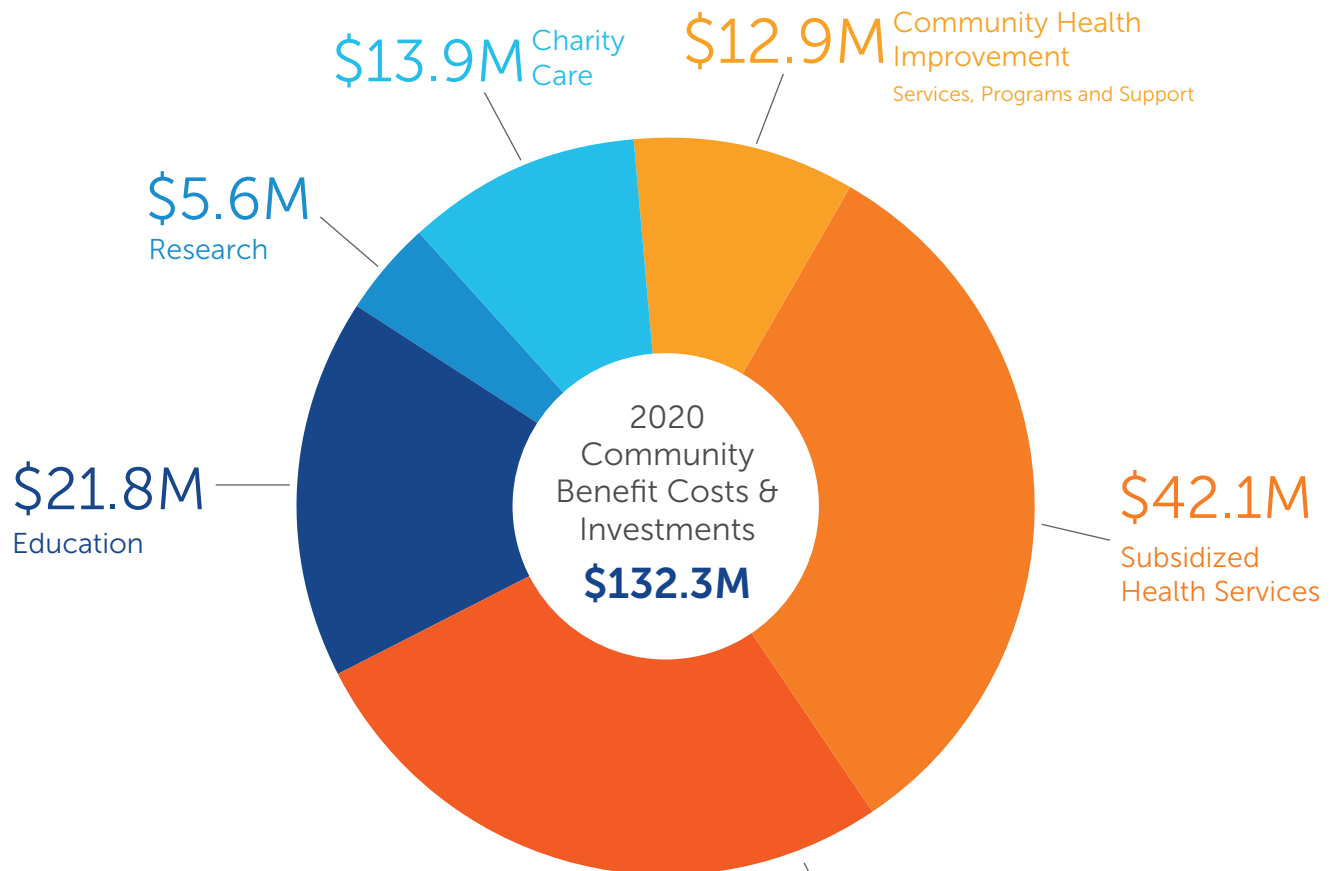


Financials

2020 Community Benefit

2020 Community Benefit Summary



Summa Health and Affiliate*

\$12.9M Community Health Improvement Services, Programs and Support

\$42.1M Subsidized Health Services

\$36.0M Medicaid Shortfall

\$21.8M Education

\$5.6M Research

\$13.9M Charity Care

*To measure and report community benefit, Summa Health, which includes Summa Health System—Akron, Barberton and St. Thomas Campuses, Summa Health Medical Group and Summa Rehab Hospital, a joint venture between Summa and Vibra Healthcare, follows Internal Revenue Service and Catholic Health Association guidelines.

