



We are Summa



Contents

Introduction	3
Summa at a Glance	4
Summa Health	6
Summa Health System – Akron Campus	7
Summa Health System – Barberton Campus	8
Summa Health System – St. Thomas Campus	9
Summa Rehab Hospital	10
Summa Health Medical Group	11
SummaCare	12
Summa Foundation	13
Community Benefit & Diversity	14
Summa Health Network	15
NewHealth Collaborative, an Accountable Care Organization	16
Medical Education	17
Research and Innovation	17
Community Health Center Locations & Services	18-19
Emergency Department Locations	20-21
Akron, Ohio	22-23



Moving forward, together

We are fortunate to work for Summa Health, an organization that not only improves the health and wellness of our community, but serves as an economic engine that fuels the city for growth. As employees of Summa Health, we all have a passion for serving our patients and this community. We're dedicated to providing the high-quality, compassionate care that Summa has built its reputation on for 125 years.

Our Corporate Commitments define the essence of who we are— one unified Summa Health. They represent what we stand for, and what makes Summa Health the best place to work—and receive care—in our region.

As we balance providing high-quality care for our patients, teaching the next generation of clinicians, developing new models of care and remaining financially strong through it all, we remain aware of the great responsibility we have to our patients. It's a responsibility we embrace and take very seriously.

In the midst of this changing healthcare industry, we remain focused on what's important: providing quality care for our patients.

Healthcare systems nationwide are working tirelessly to evolve their organizations. I am confident that our extraordinary team is more than up to the challenge of staying at the forefront of our industry and continuing to improve the care we provide to this community. My job is to create a culture of engagement and feedback at Summa Health that will help guide those

decisions and ensure that we are always focused on serving our community and one another.

We also remain dedicated to our mission of population health by helping our patients own their healthcare decisions and make real lifestyle changes. We will improve the patient experience by providing access to care at the right place at the right time, and coordinating the care between every patient's team of caregivers. This allows us to provide higher quality care at lower costs.

Thank you for joining me on this important and exciting journey. Together, we will continue to build a bright future for Summa Health and a brighter future for our region.

Cliff Deveny, M.D.
President and CEO

Summa Health at a Glance

Our Belief:

Healthy individuals lead to a healthier community, something we're all part of. It's our job to help people get healthy, stay healthy and improve the well-being of those around them. That's why, together, we're focused on solving problems, removing obstacles, eliminating frustrations and taking the pain away to create a healthier tomorrow.

Our Insight:

Healthcare isn't just about fixing what's wrong; it's also about preventing the need for fixing! If a patient comes to us to get better, we'll provide both the treatment and attention needed to get them back on their feet, but we're also staying a step ahead to keep each patient well. Caring for our patients at the right time means caring for each one all the time.

Our Approach:

We're passionate about healthcare, and we wouldn't change that for the world. But we're also people. Our main focus is connecting with the patient, treating them like family and providing each patient the same care we'd provide our own family member. This helps us get one step closer to a healthier community.

Our Commitments

Our six commitments define the essence of who we are—not as individual employees or clinicians—but as one unified Summa Health.

They represent what we stand for, and what makes Summa Health the best place to work—and receive care—in our region.

For Summa Health to succeed, these commitments need to be more than just words on a page.

They need to be the embodiment of who we are. And they need to represent a promise we make to ourselves and this community: That things are different here at Summa Health, and that we're committed to you.



Serve with passion

- Appreciate the privilege we have every day to serve the people of our community at some of the most vulnerable times in their lives... when they are sick, injured, frightened and in pain. Be the calm in their storm.
- Look for the joy in our work, paying attention to the impact each of us can have on the lives of others.
- Serve with integrity by always following through on commitments, being honest and acting ethically.
- Create a welcoming environment by making eye contact and greeting others we pass in hallways and elevators.
- Recognize and celebrate what is right about Summa Health while always looking for opportunities to make the care we provide even better.
- Go above and beyond.



Take ownership

- Model the actions and qualities that you seek in others.
- Beyond just identifying the problem, be a part of the solution in any situation.
- Even when a solution seems like the right one, continue to evaluate it and make changes to improve the outcome.
- Be aware of your own emotions and the ways they may affect how others react to you.
- To ensure a safe environment for patients and colleagues, always follow "I'm 4 Safety" behaviors.
- Advocate for patients, ensuring they get what they need and have the best possible care experience.



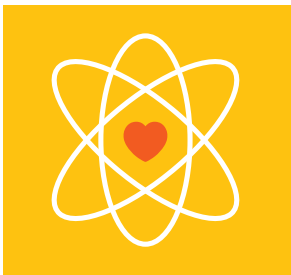
Value every person

- Look for the best in every individual we serve and in those we work with.
- Treat others without bias or judgment; we have not walked in their shoes.
- Respect and celebrate the diversity of the patients we serve and the talented colleagues we work with every day.
- Treat others with courtesy and respect, even when we may disagree with their ideas.
- Recognize the talents of others on our team, expressing thanks for their contributions.
- Offer a friendly ear to colleagues who may be struggling. Be willing to reach out to others when you need help or are having a bad day.



Personalize care

- Empower patients and family members to be involved in decisions related to their care.
- Communicate openly and effectively with patients and their family members, encouraging them to share their thoughts, concerns and questions.
 - Make eye contact.
 - Encourage patients and family members to share their questions and concerns by asking open-ended questions such as, "How can I help you most right now?"
 - Listen actively and ensure understanding by paraphrasing back what the patient has just told you.
- Always knock and ask patients if it is all right to enter their room.
- Call patients by their preferred name each time you enter their room.
- Introduce yourself by name and explain your role on the care team to patients and family members.
- Improve the continuity of care by always helping patients know and understand what comes next during their visit or stay.



Work collaboratively

- Encourage patients, family members and colleagues to speak up when they have a concern by proactively seeking their ideas and asking good questions.
- Seek the input and ideas of colleagues in decisions to find the best solution and to increase the chances for success.
- Be eager to learn, with an openness to new knowledge that will help the team provide consistently better care.
- Recognize the strength of our teaching programs in providing world-class care for patients today and preparing the next generation of tomorrow's professionals.
- Speak positively about colleagues and other departments, creating a higher degree of confidence and trust among patients and families.



Partner with the community

- Appreciate that as Summit County's largest employer, Summa Health plays an important role in keeping our community strong, healthy and successful.
- Look for opportunities to give back to our community through volunteerism, which contributes to the health and vitality of the greater Akron region.
- Recognize that we serve diverse communities through our clinics, special programs and partnerships with other community agencies.

Summa Health



Summa Health – headquartered in Akron, Ohio – is one of the largest integrated healthcare delivery systems in the state. Formed in 1989 with the merger of Akron City and St. Thomas Hospitals, this nonprofit system now encompasses a network of:

- Hospitals
- Community-based health centers
- Health insurance entity
- A multi-specialty group practice
- An entrepreneurial entity
- Research and medical education
- A Foundation

Summa Health has organized all of its medical services under the umbrella of Summa Health System. Summa Health System offers exceptional approaches to healthcare delivery through multiple operating entities.

Vital Statistics*

Licensed Beds	1,065
Employees	7,800+
Inpatient Admissions	36,238
Adult Patient Days	169,124
Average Length of Stay	4.67
Inpatient Surgeries	6,996
Outpatient Surgeries	15,161
Orthopedic Surgeries	4,348
Emergency Visits	155,171
Births	4,502
Diagnostic Cardiac Catheterizations	2,195
Interventional Cardiac Catheterizations	1,220
Home Care Visits	207,231
Observation Patients	10,759

Summa Health System has served millions of patients in comprehensive acute, critical, emergency, outpatient and long-term/home-care settings and represents more than 1,000* licensed inpatient beds in the following clinical settings:

- Summa Health System – Akron Campus
- Summa Health System – Barberton Campus
- Summa Health System – St. Thomas Campus
- Summa Rehab Hospital

Outpatient care is extended throughout Summit, Medina, Portage, Stark and Wayne counties in multiple community health centers. Providing superior, multi-specialty patient care, medical research and continuing medical education, Summa is consistently ranked one of the best healthcare providers in the country.

Various Summa Health System hospitals, service lines, joint ventures and affiliates are recognized by the following organizations:

- American College of Surgeons Commission on Cancer
- American College of Radiology
- American Nurses Credentialing Center
- American Osteopathic Association
- Centers for Medicare and Medicaid Services
- Commission on Accreditation of Rehabilitation Facilities
- Facilities Accreditation Program
- Healthgrades
- National Accreditation Program for Breast Centers
- Premier Healthcare Alliance
- Society of Cardiovascular Patient Care
- The American Heart Association
- The Joint Commission
- The Leapfrog Group
- Thomson Healthcare
- U.S. News and World Report

*As of 12.31.19, all entities

Summa Health System – Akron Campus

141 N Forge St
Akron, OH 44304
330.375.3000

summahealth.org

Akron City Hospital was founded in 1892 to provide a place where patients could be treated with compassion, coupled with the best principals of medical practice.

From the first accredited radiology department in the country to the first adult open heart surgery in Akron (and one of the first in the country), Summa Health System - Akron Campus has achieved national recognition as a provider of quality, compassionate healthcare.

Recently, Summa Health announced plans to invest up to \$350 million in its facilities to help establish Summa as the leading healthcare provider in the region. This investment included extensive renovations at Akron Campus including: construction of a new 300,000 square foot tower, which includes new facilities for Summa's Women's Health program, modern inpatient rooms and nursing units and expanded surgical capacity; construction of a new 50,000 square foot medical office building; and increasing the number of private rooms to approximately 80 percent.

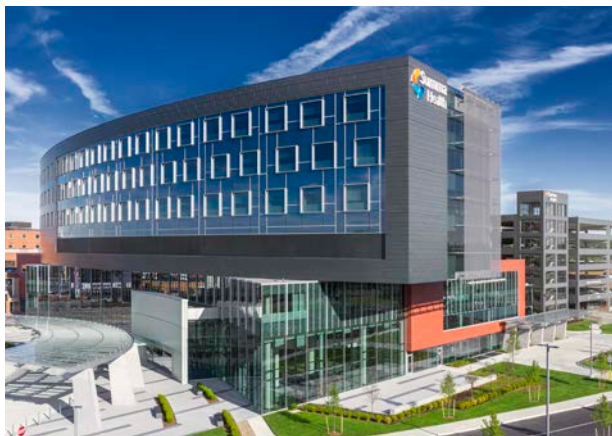
Summa Health System - Akron Campus is designated as an accredited Chest Pain Center by the Society of Cardiovascular Patient Care (SCPC) and is a Certified Primary Stroke Center.

The hospital is also an academic medical center with 15 multispecialty residency and fellowship programs to train northeast Ohio's next generation of healthcare providers. Approximately 53 percent of program graduates remain in the community to practice at Summa hospitals.

A Level 1 Trauma Center, Akron Campus expanded its emergency department (ED) in 2012. The renovated ED provides more than 100,000 square feet and 76 patient beds and is equipped to serve more than 80,000 patients annually.

In October 2017, Dr. Gary Williams and his wife, Pamela, committed \$5 million to the health system. In recognition of what is the second largest gift in its history, Summa Health established the Dr. Gary B. and Pamela S. Williams Center for Breast Health. The \$5 million gift is the largest physician-donated gift ever to Summa and is believed to be the largest physician gift ever in Summit County.

Longtime Summa Health supporters Ann and David Brennan continued their generous support in 2015 with a gift of \$6 million, the largest in Summa's history. The donation will be used to further Summa's strategy of becoming the region's leader in population health. By transitioning to a population health management organization, Summa will be better positioned to provide integrated and coordinated care and a superior experience for the people of northeast Ohio.



Year founded: **1892**

Total employees: **5,200+***

Total licensed beds: **734†**

*Figure shared with Summa Health System – St. Thomas and Barberton Campuses

† Figure shared with Summa Health System- St. Thomas Campus

Summa Health System – Barberton Campus

155 Fifth St NE
Barberton, OH 44203
330.615.3000

summahealth.org/barberton



Summa Health System - Barberton Campus has served residents of Barberton and the surrounding communities since its founding in 1915. In December 2007, Barberton Campus became a full member of Summa Health. The hospital is located approximately 10 miles southwest of Akron.

Barberton Campus combines the comfort of an accessible community hospital with the latest advancements in medical care. The hospital provides the community with easy access to comprehensive, high-quality cancer services at the Commission on Cancer accredited Summa Health Parkview Pavilion, as well as the full spectrum of cardiovascular disease care including diagnostic, interventional and surgical services.

In 2015, Summa Health announced plans to make a significant multi-million dollar investment to expand and enhance services at the Barberton Campus. The investment, part of Summa's vision for population health management, impacted both inpatient and outpatient services. Phase I of the plan included \$22 million in improvements addressing the greatest needs of the Barberton community – improved access and modernized facilities. Access to outpatient services improved with a new imaging and diagnostic center in the former emergency department. Operating and endoscopy rooms also were modernized with state-of-the-art equipment.

Summa also continues to invest more than \$10 million in the facility for other projects, such as the electronic medical record implementation and the purchase of new IV pumps.

Year founded: **1915**
Total employees: **5,200+***
Total licensed beds: **220**



*Figure shared with Summa Health System – St. Thomas and Akron Campuses

Summa Health System – St. Thomas Campus

444 N Main St
Akron, OH 44310
330.375.3000

summahealth.org

Originally operated by the Sisters of Charity of Saint Augustine as a non-denominational, nonprofit general hospital with 164 beds, Summa Health System - St. Thomas Campus opened its doors to the Akron community in 1922. St. Thomas merged with Akron City Hospital to become Summa Health System in 1989.

St. Thomas Campus was the first in the country to recognize the medical aspects of alcoholism as a disease and is the founding location of Alcoholics Anonymous. The hospital opened the nation's first alcoholism treatment ward and continues this longstanding dedication today.

Continuing the tradition of innovative behavioral health services, St. Thomas Campus is the headquarters of the Summa Health Behavioral Health Institute. The center serves residents of Summit, Portage, Medina and Stark counties and operates specialized programming to treat specific behavioral health concerns including the Summa Health Traumatic Stress Center and Summa Health Ignatia Hall Addiction Medicine Intensive Outpatient Program.



Year founded: **1922**

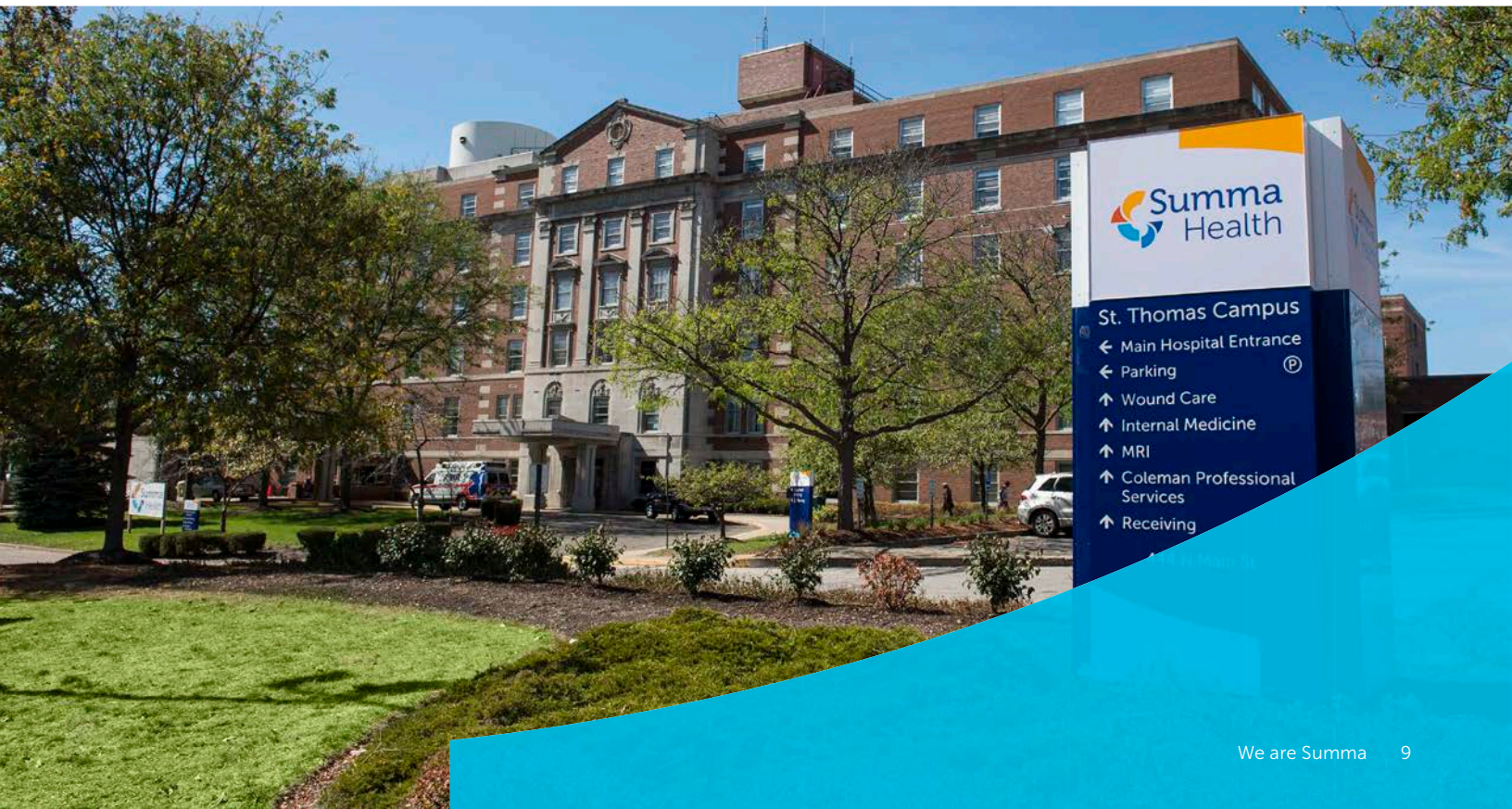
Total employees: **5,200+***

Total licensed beds: **734†**



*Figure shared with Summa Health System – Akron and Barberton Campuses

†Figure shared with Summa Health System – Akron Campus



Summa Rehab Hospital

29 N Adams St
Akron, OH 44304
330.572.7300

summarehabhospital.com

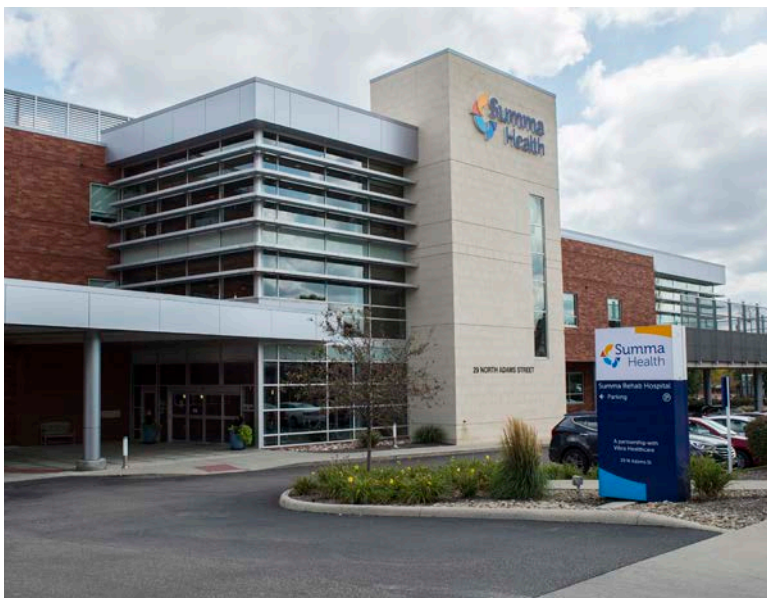
Summa Rehab Hospital, a joint venture between Summa Health System and Vibra Healthcare, is a 60-bed acute medical facility providing a rehabilitation regimen based on the specific needs of each patient. The freestanding facility is dedicated to inpatient rehabilitation by a multidisciplinary team comprised of physicians; nurses; physical, occupational, speech and recreational therapists and case management workers. The hospital is accredited by the Joint Commission and The Commission on Accreditation of Rehabilitation Facilities (CARF). In 2020, Newsweek named Summa Rehab Hospital one of the Best Physical Rehabilitation Centers for 2020. This recognition highlights the nation's top physical rehabilitation facilities based on quality of care, quality of service, quality of follow-up care and accommodations and amenities.

Summa has installed and implemented the most current technologies available in the rehabilitation field, including:

- Body weight supported treadmill training and therapy for locomotor recovery
- Active assisted motion technology for upper and lower limb recovery
- Vital stimulation for swallowing
- Car transfer simulated system

Highlights of the freestanding, fully-dedicated rehabilitation hospital:

- All private rooms with private baths on two levels
- Rehab gym totaling more than 5,000 square feet with two-story elevation; natural light for improved healing and quality of life
- Private treatment space on two levels
- Outdoor therapeutic ambulatory patio with various ambulatory surfaces
- Bariatric rooms with overhead lift device to support 1,000 pounds
- Bedside dialysis capability in all rooms
- ADL suite - bath, bedroom, kitchen and living space
- Day rooms located on two levels dedicated for patients, families and visitors
- In-house radiology suite and pharmacy
- Patient-specific eRehab outcomes data
- Electronic medical records (EMR)
- Classroom for community programming
- On-site durable medical equipment and prosthetic services



Year founded: **2012**

Total employees: **265**

Total staffed beds: **60**

Summa Health Medical Group

1077 Gorge Blvd
Akron, OH 44310
330.375.3864

summahealth.org/shmg

Year founded: **2006**

Total support staff: **1,245+**

Total physicians: **313+**

Medical specialties: **35+**



Summa Health Medical Group is a multispecialty group of more than 300 integrated, coordinated physicians aligned with Summa Health and its entities through the active engagement of its physicians. As the employed physicians of Summa Health, SHMG physicians are driven by Summa's mission to deliver the highest quality, compassionate care to patients and members and to contribute to a healthier community.

A key component of Summa's integrated healthcare delivery system, Summa Health Medical Group physicians provide patient-centered care while enjoying the benefits of partnership with an inclusive physician organization that shares their passion for, and commitment to, clinical excellence. As members of NewHealth Collaborative, a clinician-led accountable care organization, Summa Health Medical Group physicians are leading the way toward value-based healthcare with initiatives such as the patient-centered medical home (PCMH) and meaningful use of health information technology.

Summa Health Medical Group's integrated network of multidisciplinary physicians — connected through an electronic medical record (EMR) — ensures patients receive exceptional coordination of care across Summa's five-county service area. SHMG provides patients with easy access to patient-centered primary care services in hospital- and community-based settings, as well as a comprehensive referral base of sub-specialists in more than 35 specialty areas including:

- Bariatric surgery
- Behavioral health
- Breast surgery
- Cardiology
- Cardiothoracic surgery
- Colorectal surgery
- Critical care medicine
- Dermatology
- Endocrinology
- Family medicine
- Gastroenterology
- General surgery
- Geriatrics
- Gynecology
- Gynecology/oncology
- Hematology/oncology
- Hepatobiliary surgery
- Infectious disease
- Integrative medicine
- Internal medicine
- Maternal fetal medicine
- Nonsurgical weight management
- Minimally invasive surgery
- Neuro critical care
- Neurology
- Obstetrics/gynecology
- Ophthalmology
- Orthopedics/sports medicine
- Otolaryngology
- Palliative care and hospice
- Physical therapy/rehabilitation
- Plastic surgery
- Pulmonary medicine
- Radiation oncology
- Rheumatology
- Trauma surgery
- Urgent care
- Urogynecology
- Urology
- Vascular surgery

SummaCare

1200 E Market St, Suite 400
Akron, OH 44305
800.996.8411

summacare.com

SummaCare is Summa Health's provider-owned insurance company. Headquartered in the East End in Akron, Ohio, SummaCare offers:

Employer Group Options

- Fully-insured PPO and consumer-directed plans
- Self-funded benefit administration
- Multiple Employer Welfare Arrangement (MEWA) plans
- Retiree group coverage
- Ancillary products such as life, dental and vision

Individual Options

- Medicare Advantage HMO & HMO-POS plans for individuals age 65 and older
- Fully-insured HMO and plans for individuals under age 65

SummaCare's health management services provide utilization management, case management, care coordination, disease/condition management, health and wellness services and health coaching. These services are provided with the goal of improving the health of the community while controlling healthcare costs.

SummaCare places a high value on building strong relationships with key partners including members, physicians, institutional and ancillary providers and community-based agencies throughout our northern Ohio service area.

SummaCare is a vital part of Summa Health. The inclusion of a health plan is a market advantage for Summa and essential to its long-term success as an Integrated Healthcare Delivery System.



Total employees: **322**
Group self-funded members: **17,413***
Commercial fully-insured members: **14,261***
MEWA members: **4,374***
Medicare Advantage members: **22,288***
Individual HMO members: **2,067***

*As of Nov. 2020

Summa Foundation

141 N Forge St
Akron, OH 44304
330.375.3159

summahealth.org/giving



Phylis Ferrara
President, Summa Foundation
Chief Development Officer, Summa Health

Patrick O'Neill
Chair, Summa Foundation Board of Directors

Helping Summa Health care for the community ... now and always

Summa Foundation supports patient care, medical education and research through philanthropy. Generous contributions averaging more than \$8.5 million annually help Summa Health fulfill its mission to provide the highest quality, compassionate care and contribute to a healthier community. Through meaningful engagement with benefactors, Summa Foundation links community supporters with philanthropic priorities that enhance the delivery of patient care and empower clinical excellence across the entire system.

Among other benefits, philanthropic gifts support physician residency programs, advanced certifications for nurses, behavioral health programs, groundbreaking research, the latest technologies for diagnosis and treatment, cancer support services and much more. They help Summa Health recruit and retain the region's best physicians, assuring patients and families a continuum of quality care far into the future. Summa Foundation also collaborates with system and clinical leaders to document the impact of philanthropic investments and to share that impact with donors.

From its founding in 1892, made possible by a \$10,000 bequest from the estate of Boniface DeRoo, to the comprehensive health system it is today, Summa Health thrives with the continuing generosity of faithful friends and benefactors and the help of Summa Foundation.

Community Benefit & Diversity

1077 Gorge Blvd
Akron, OH 44310
234.312.5256

summahealth.org

Government Relations and Health Policy

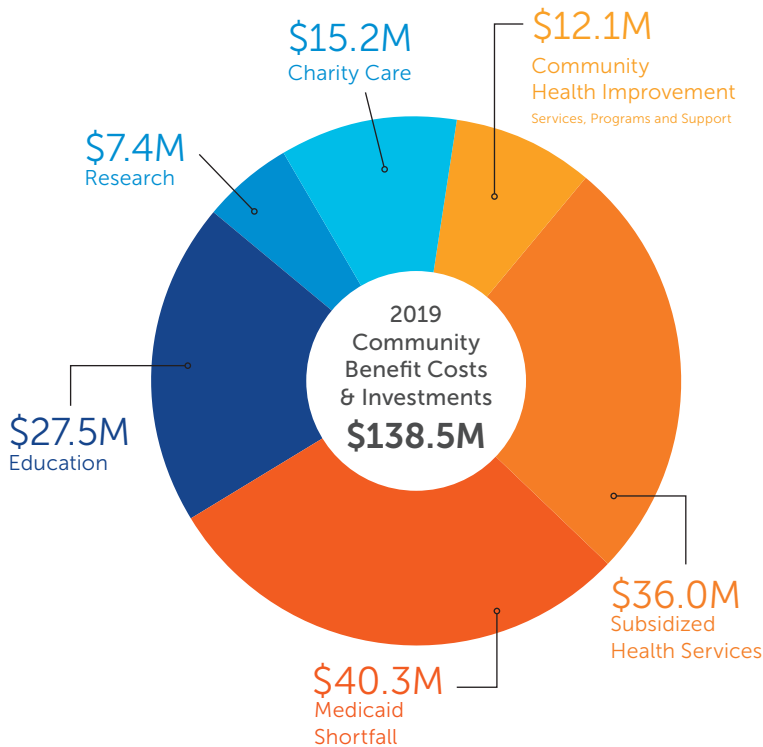
Summa's Government Relations and Health Policy department is dedicated to elevating Summa Health as a leader in the public sector among those responsible for determining the future of healthcare in Ohio and throughout the nation.

By actively building and enhancing public sector relationships at the local, regional, state and federal government levels, the department works to advance Summa's leadership in health policy advocacy including, but not limited to, issues such as Medicare, Medicaid, insurance reform and medical education and research.

Community Benefit & Diversity

The Community Benefit and Diversity department leads efforts to address health disparities and other important community needs, and to raise awareness of health and healthcare issues affecting the communities served by Summa Health.

2019 Community Benefit Investment



Summa Health Equity Center

The Summa Health Equity Center opened in March 2012 with a goal to provide outstanding, quality care and identify, reduce and eventually eliminate health disparities to achieve health equity. The services and activities provided at the center have involved collaborations with nearly two dozen organizations and area businesses including Minority Behavioral Health Group and the Ohio Department of Jobs and Family Services.

Programs at the center have included free diabetes support groups with educational presentations; Q&A sessions by a wide array of health professionals; Medicaid enrollment opportunities; CPR demonstrations; nutrition/cooking classes; line dancing classes; a fatherhood walk and policy/advocacy meetings.

Summa Health Network

1077 Gorge Blvd
Akron, OH 44310
330.996.8687

summahealth.org/summa-health-network

Summa Health Network represents nearly 2,300 providers throughout Summa Health's member hospitals. Summa Health Network contracts with national and regional payers on behalf of its provider and hospital members. With membership opportunities for physicians, advance practice nurses, optometrists, chiropractors, podiatrists, and physician assistants, Summa Health Network serves as a mechanism to effectively align and engage community providers with Summa Health while preparing and advancing providers into value-based agreements with Summa Health's accountable care organization, NewHealth Collaborative.

Summa Health Network allows for provider choice regarding participation in approximately 20 Messenger Model payer agreements among commercial, Medicare and Medicaid payer networks, for an enhanced provider experience. Along with simplified credentialing and efficient demographic update processes, provider members gain the support of the Summa Health Network Provider Support Team for payer compliance assistance and claims issue resolution. Provider members and their staff are also offered participation in seminars and events throughout the year.



NewHealth Collaborative

An Accountable Care Organization

1077 Gorge Blvd
Akron, OH 44310
330.996.8687

summahealth.org/aco



NewHealth Collaborative (NHC), Summa Health's Accountable Care Organization (ACO), began its operations in January 2011. It is a clinician-led ACO that partners with communities to compassionately care for and serve its populations in an accountable, value- and evidence-based manner.

NHC represents more than 500 providers. NHC and its providers manage the healthcare of over 100,000 lives which includes Summa's employees as well traditional Medicare beneficiaries to name a few. This equates to a total medical spend of approximately \$700 million.

NHC is one of the most successful ACOs in Ohio achieving a savings each performance year in the Medicare Shared Savings Program since 2013. NHC has generated approximately \$53 million in savings for Medicare, and shared \$22 million with NHC provider practices. NHC scored 97.72% on MSSP quality metrics in 2019 which is NHC's best performance and highest score in Ohio. Key to its success is its focus on fundamental strategies of primary care transformation, population-based care management and care coordination, and enhanced access to care and services from the primary care team.

Research & Innovation



Summa Health supports the Research & Innovation enterprise with almost \$3 million to ensure the advancement of science. We continuously seek to transform the care we provide and generate the knowledge needed for the breakthrough medical advancements and treatments of tomorrow. Summa has more than 100 active clinical studies and enrolled more than 1,100 patients on clinical trials in 2019.

The system supports the efforts of our physicians and staff through the Clinical Research Center, which is an outpatient clinic with a centralized staffing model that supports all clinical trials across the system. In 2019, we were awarded \$2.2 million in new grant money and are currently managing 34 open grants. Our physicians, fellows/residents and nurses published almost 150 articles in peer-reviewed journals. Our most active research specialties include Oncology, Cardiology, Infectious Disease, Neurology, Trauma, Psychiatry and Pathology, and many at the system have collaborative research efforts with our academic regional partners, such as Northeast Ohio Medical University (NEOMED), the University of Akron and Kent State University.

Medical Education

As a leader in medical education, Summa Health System supports the education of its physicians and healthcare professionals. Summa Health System - Akron and St. Thomas Campuses are teaching affiliates of the Northeast Ohio Medical University (NEOMED) and include a staff of physicians and accredited residency and fellowship programs that foster a dynamic medical environment.

Summa Health System offers accredited residency and fellowship programs in:

- Addiction Medicine
- Advanced gastrointestinal minimally invasive surgery/bariatric (non-ACGME)
- Cardiovascular disease
- Cytopathology
- Family medicine (allopathic and osteopathic accredited)
- General practice dentistry
- General surgery
- Geriatric medicine
- Hospice & Palliative
- Internal medicine
- Medical Simulation
- Obstetrics/gynecology
- Ophthalmology
- Orthopaedic surgery
- Pathology
- Pharmacy
- Plastic surgery
- Preliminary medicine
- Psychiatry
- Sports medicine
- Transitional medicine
- Urology

Summa Health System - Barberton Campus has a family practice residency program affiliated with NEOMED.



Summa Health Medina Medical Center



Summa Health at Wadsworth Community Center



Summa Health White Pond Medical Center

Summa Throughout the Region

Health Centers

Summa Health Cuyahoga Falls Medical Center

1860 State Road, Suite B2
Cuyahoga Falls, OH 44223
330.922.4648

Summa Health Equity Center

1493 South Hawkins Avenue
Akron, OH 44320
330.865.5333

Summa Health Green Medical Center

1835 Franks Parkway
Uniontown, OH 44685
330.899.0103

Summa Health at Green Family YMCA

3838 Massillon Road
Uniontown, OH 44685
330.899.5500

Summa Health Hudson Medical Center

5655 Hudson Drive
Hudson, OH 44236
330.650.6710

Summa Health Medina Medical Center

3780 Medina Road
Medina, OH 44256
877.504.7849

Summa Health Rootstown Medical Center (Opening October 2021)

4211 State Route 44
Rootstown, OH 44272

Summa Health Spine and Neuroscience Center

3378 W. Market St., Suite B
Fairlawn, OH 44333
330.576.3500

Summa Health Stow-Kent Medical Center (spring 2021)
3825 Fishcreek Road
Kent, OH 44240

Summa Health Tallmadge Medical Center

60 North Ave
Tallmadge, OH 44278

Summa Health Wadsworth-Rittman Medical Center

195 Wadsworth Road
Wadsworth, OH 44281
330.331.1000

Summa Health White Pond Medical Center

One Park West Boulevard
Akron, OH 44320
330.873.1518

Summa Health Therapy at Medina

3780 Medina Road, Suite 300
Medina, OH 44256
234.867.7749

Summa Health Therapy at Park West

One Park West Blvd, Suite 360
Akron, OH 44320
330.375.4513

Summa Health Therapy at Spine and Neuroscience Center

3378 W. Market St., Suite B
Fairlawn, OH 44333
330.576.3500

Summa Health Therapy at Tallmadge Recreation Center

46 North Munroe Road
Tallmadge, OH 44278
330.630.2715

Summa Health Therapy at Wadsworth Community Center

621 School Drive
Wadsworth, OH 44281
330.334.0705

Summa Health Therapy at Wellness Center in Hudson

5625 Hudson Drive
Hudson, OH 44236
330.655.8070

Therapy Services

Summa Health Therapy at Anna Dean Professional Park

28 Conservatory Drive, Suite A
Barberton, OH 44203
330.615.5000

Summa Health Therapy at Green Family YMCA

3838 Massillon Rd, Suite 320
Uniontown, OH 44685
330.899.5599

Summa Health Therapy at Kohl Family YMCA at University Park

477 East Market Street
Akron, OH 44304
330.375.7357

Summa Throughout the Region

Summa Health encompasses a network of community-based health and therapy centers dedicated to providing high quality healthcare services to preserve and enhance the health and well-being of the citizens of the community.

Summa Health Centers	Ambulatory surgery	Bone densitometry	CT scans/ Low dose CT/Lung screening	Diagnostic ultrasound	3D Mammography	Fitness programs	Lab services	Massage therapy	Medical oncology/infusion therapy	MRI	Neuroscience (EEG, ENG, NCT)	Nuclear medicine	Pelvic floor dysfunction	Physical and occupational therapy	Rehabilitation services	Sleep medicine	Speech therapy	Sports Medicine/Medical Orthopedics	Vascular/Cardiac ultrasound	X-Ray
Cuyahoga Falls Medical Center		○		○	○		○													○
Equity Center						○	○													
Green Medical Center	○*						○				○	○						○	○	
At Green Family YMCA		○	○		○		○		○				○	○	○	○				○
Hudson Medical Center		○	○	○	○		○		○				○	○				○	○	○
Jean & Milton Cooper Pavilion							○		○											
Medina Medical Center	○	○	○	○	○		○		○	○		○	○		○			○		○
Neuroscience Center										○					○					
Parkview Pavilion				○	○		○		○											
Richard M. and Yvonne Hamlin Pavilion	○	○		○	○		○		○		○	○							○	○
Rootstown Medical Center (Opening October 2021)							○											○		
Spine and Neuroscience Center										○				○						
Stow-Kent Medical Center^																				
Tallmadge Medical Center																				
Wadsworth-Rittman Medical Center	○	○	○	○	○		○		○		○							○	○	○
White Pond Medical Center		○	○	○	○		○		○											○

Summa Health Therapy Services

Anna Dean Professional Park												○	○					○		
Green Family YMCA																		○		
Kohl Family YMCA at University Park					○						○	○	○					○		
Medina Medical Center											○							○		
Park West																				
Spine and Neuroscience Center																		○		
Tallmadge Recreation Center												**	○					○		
Wadsworth Community Center											○	○	○					○		○
Wellness Center in Hudson					○		○				○	**	○					○		

*Consults Only

** PT Only

^ Opening Spring 2021

Summa Throughout the Region

Emergency Department Locations

As a result of Summa Health System's comprehensive emergency services network, patients receive the right care, at the right time, at the right location, from the right provider – no matter where they access care within Summa Health.

In order to ensure patients across Summa's five-county service area have easy access to the care they need close to home and/or work, Summa invested \$96 million to grow its network of emergency departments.



Summa Health System - Akron Campus Emergency Department

151 N. Forge St, Akron, OH 44304

Our Akron Campus Emergency Department is a Level 1 Trauma Center and one of the largest and most advanced Emergency Departments in the region. It is a Certified Chest Pain Center and a Certified Stroke Center and serves as the tertiary transfer center for all Summa facilities and outlying hospitals.



Summa Health System - Barberton Campus Emergency Department

155 Fifth St. NE, Barberton, OH 44203

Summa Health Barberton Emergency Department includes 32 private rooms and an additional 10-bed "fast track" treatment area. Additionally, the emergency department has a large waiting area for families, adequate parking, a dedicated general radiology unit, dedicated triage space, and a separate entrance for EMS squads.



Summa Health Green Emergency Department

1825 Franks Parkway, Uniontown, OH 44685

Summa Health Green Emergency Department provides community access to a wide range of services. Located just off I-77 at the corner of Boettler and Massillon roads, the Summa Health Green Emergency Department serves those who live or work in Green, Uniontown, Hartville, Coventry, Springfield, Portage Lakes, Canal Fulton, Clinton, Jackson and North Canton.



Summa Health Wadsworth-Rittman Emergency Department

195 Wadsworth Rd., Wadsworth, OH 44281

The James and Linda Venner Emergency Center was completed in 2011 and features 16,000 square feet and 15 patient beds. It provides full service emergency care to the greater Wadsworth region.

The emergency room includes a clinical decision unit (CDU). The CDU, staffed by specialized ED nurses and physicians, cares for “observation” patients – those who need prolonged monitoring and treatment to help determine if they should be admitted to the hospital or discharged home.



Akron, Ohio

Akron is located approximately 35 miles south of Cleveland. It lies within a 500-mile radius of 42 major U.S. cities, where 57 percent of the country's population and 60 percent of the country's buying power are found.

Northeast Ohio is home to several Fortune 500 company headquarters, including Goodyear, J.M. Smucker, Progressive Insurance and Sherwin Williams. Also, northeast Ohio is a national leader in polymer and liquid crystal research and development.

The Greater Akron area is a welcoming community rich in heritage and cultural diversity, offering big city amenities with a hometown feel in one of America's most affordable metropolitan areas. More than 6,000 acres in the city are occupied by parks, and surrounding lakes and reservoirs and several golf courses afford recreation facilities; the southern limit of Cuyahoga Valley National Park is just north of the city. Residents have convenient access to a number of well-known recreational activities.

Professional sports teams:

- Cleveland Browns
- Cleveland Cavaliers
- Cleveland Indians
- Akron RubberDucks (Indians minor league team)
- Lake Erie Monsters (American Hockey League)

Museums and attractions:

- Akron Art Museum
- Akron Symphony
- Blossom Music Center
- Cleveland Museum of Natural History
- Cleveland Orchestra
- Museum of Contemporary Art
- Playhouse Square
- Professional Football Hall of Fame
- Rock and Roll Hall of Fame
- The Cleveland Museum of Art
- The John S. Knight Center

Year founded: **1825**

Population: **198,006 (2018)**

Area: **62.4 square miles**

Mayor: **Daniel Horrigan**

Outdoor parks, activities and entertainment for each season:

- Akron Zoo
- Boston Mills/Brandywine Ski Resort
- Cedar Point Amusement Park
- Cleveland Zoo
- Cuyahoga Valley National Park
- F.A. Seiberling Nature Realm
- Lock 3 (live music and entertainment park)
- Ohio and Erie Canal Towpath Trail
- Portage Lakes
- Summit County Metro Parks
- Various biking, hiking and camping sites

Nearby airports for convenient travel:

- Cleveland Hopkins International Airport
- Akron Canton Regional Airport

Institutions of higher education:

Summit County:

- The University of Akron

Cuyahoga County:

- Baldwin-Wallace University
- Case Western Reserve University
- Cleveland Institute of Art
- Cleveland Institute of Music
- Cleveland State University
- John Carroll University
- Notre Dame College of Ohio
- Ursuline College

Portage County:

- Hiram College
- Kent State University
- Northeast Ohio Medical University

Stark County:

- Malone College
- University of Mount Union
- Walsh University

Wayne County:

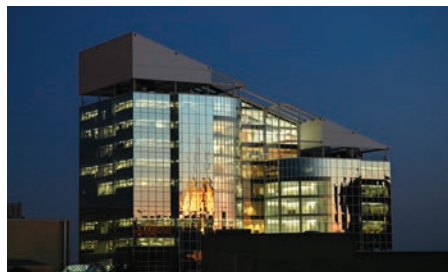
- College of Wooster



Brandywine Falls,
Cuyahoga Valley National Park



The Clubhouse,
Firestone Country Club



Goodyear Polymer Center,
The University of Akron



View of Route 82 bridge from towpath,
Cuyahoga Valley National Park

Summa Health is an integrated healthcare delivery system that provides coordinated, value-based care across the continuum for the people and populations we serve. We hold ourselves clinically and financially accountable for health outcomes in our communities.



Summa Health

141 N Forge St
Akron, OH 44304
P 330.375.3000

summahealth.org

